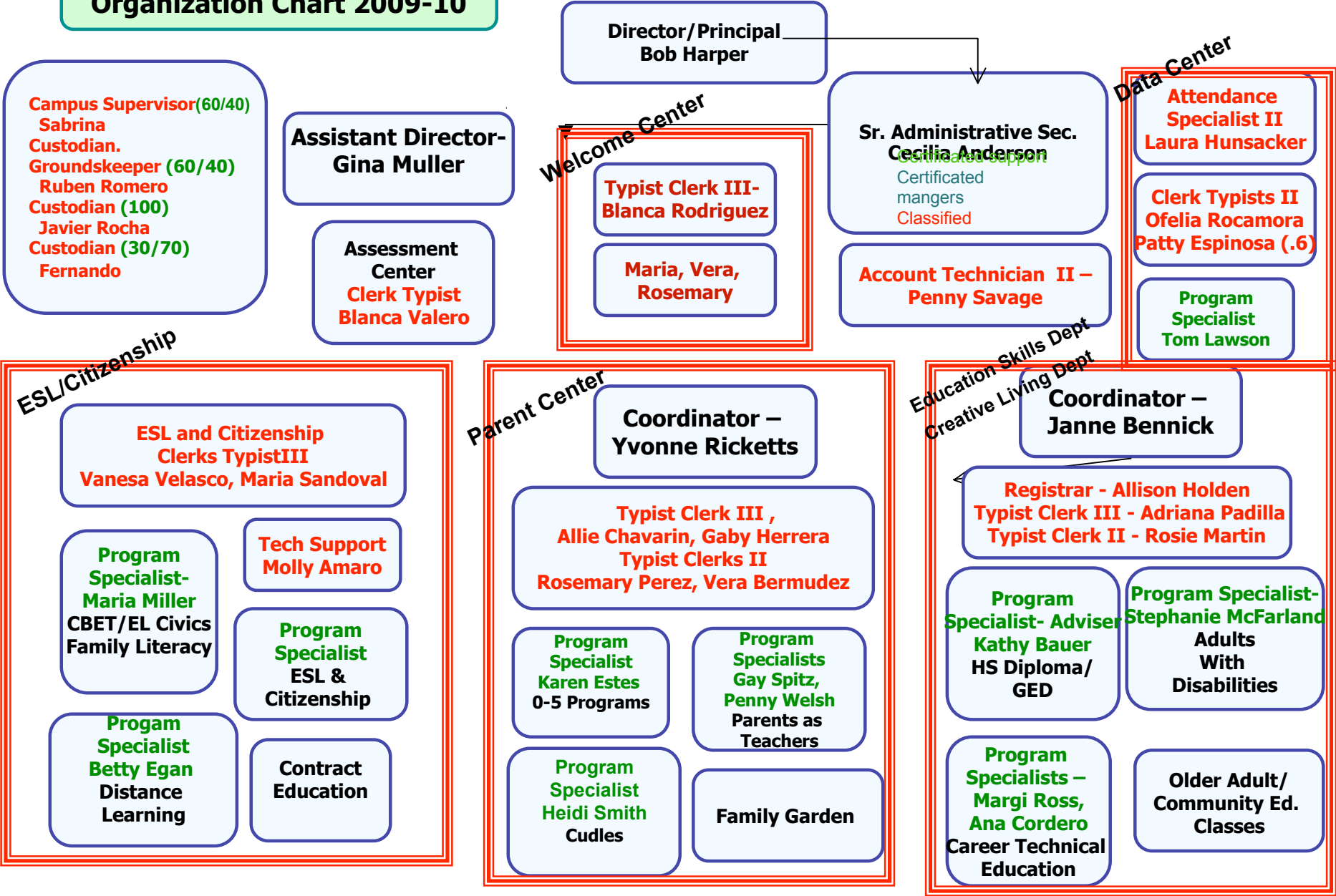


**Salinas Adult School:  
Organization Chart 2009-10**



**Salinas Adult School:  
Organization Chart 2009-10**

**Campus Supervisor (60/40)**  
Sabrina  
Custodian.  
**Groundskeeper (60/40)**  
Ruben Romero  
**Custodian (100)**  
Javier Rocha  
**Custodian (30/70)**  
Fernando

**Assistant Director-  
Gina Muller**

**Assessment  
Center  
Clerk Typist  
Blanca Valero**

**Director/Principal  
Bob Harper**

**Typist Clerk III-  
Blanca Rodriguez**

**Maria, Vera,  
Rosemary**

**Sr. Administrative Sec.  
Cecilia Anderson**  
*Certificated support  
mangers  
Classified*

**Account Technician II –  
Penny Savage**

**Attendance  
Specialist II  
Laura Hunsacker**

**Clerk Typists II  
Ofelia Rocamora  
Patty Espinosa (.6)**

**Program  
Specialist  
Tom Lawson**

**ESL/Citizenship**

**ESL and Citizenship  
Clerks Typist III  
Vanesa Velasco, Maria Sandoval**

**Program  
Specialist-  
Maria Miller**  
CBET/EL Civics  
Family Literacy

**Tech Support  
Molly Amaro**

**Program  
Specialist  
ESL &  
Citizenship**

**Program  
Specialist  
Betty Egan**  
Distance  
Learning

**Contract  
Education**

**Parent Center**

**Coordinator –  
Yvonne Ricketts**

**Typist Clerk III ,  
Allie Chavarin, Gaby Herrera  
Typist Clerks II  
Rosemary Perez, Vera Bermudez**

**Program  
Specialist  
Karen Estes  
0-5 Programs**

**Program  
Specialists  
Gay Spitz,  
Penny Welsh  
Parents as  
Teachers**

**Program  
Specialist  
Heidi Smith  
Cudles**

**Family Garden**

**Education Skills Dept  
Creative Living Dept**

**Coordinator –  
Janne Bennick**

**Registrar - Allison Holden  
Typist Clerk III - Adriana Padilla  
Typist Clerk II - Rosie Martin**

**Program  
Specialist- Adviser  
Kathy Bauer  
HS Diploma/  
GED**

**Program Specialist-  
Stephanie McFarland  
Adults  
With  
Disabilities**

**Program  
Specialists –  
Margi Ross,  
Ana Cordero  
Career Technical  
Education**

**Older Adult/  
Community Ed.  
Classes**